

## TL123AX

Platform Height:  
123 ft 1 in (37.5 m)

Lateral Reach:  
54 ft 9 in (16.7 m)

Machine Width:  
5 ft 3 in (1.58 m)

Machine Height:  
6 ft 6 in (1.99 m)

Machine Weight:  
26,235 lbs (11,900 kg)

- Compact design, travels through a double door
- Light, low surface load for use on sensitive flooring
- Smooth, proportional electro-hydraulic controls
- Reliable and comprehensive safety control system
- Hydrostatic platform leveling
- Onboard diagnostics
- Automatic self leveling outrigger system
- Setup on slopes up to 30%
- Dual power (diesel and A/C electric) for operating indoor and outdoor





# Specifications

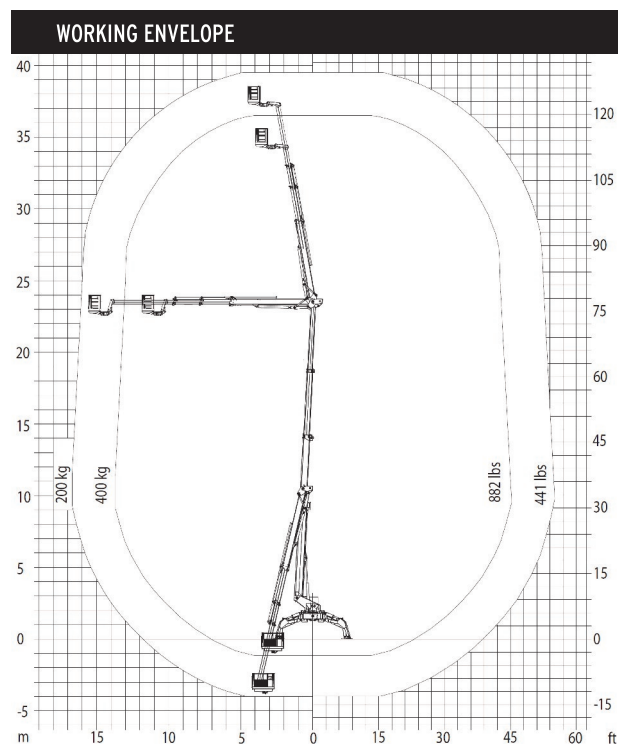
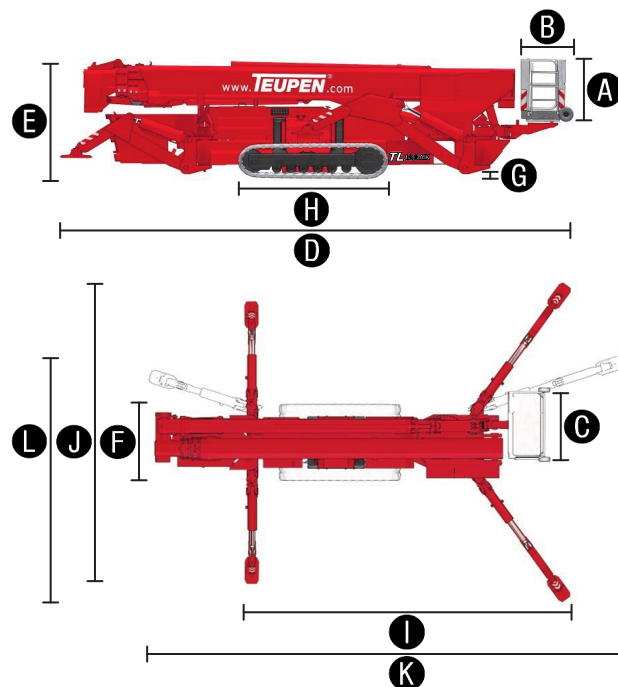
MEASUREMENTS	US	Metric
Platform height with 441 lbs	123 ft 1 in	37,50 m
Platform height with 882 lbs	113 ft 9 in	34,60 m
Horizontal outreach with 441 lbs	54 ft 9 in	16,70 m
Horizontal outreach with 882 lbs	42 ft 7¼ in	13,00 m
Up-and-over clearance, max.	72 ft 2 in	22,00 m
Platform height (A)	3 ft 7 in	1,10 m
Platform length (B)	2 ft 8 in	0,80 m
Platform width (C)	4 ft 11 in	1,50 m
Length, overall (D)	26 ft 11 in	8,20 m
Height, travelling position (E)	6 ft 6 in	1,98 m
Width, min. (F)	5 ft 3 in	1,58 m
Ground clearance, max. (G)	1 ft 10 in	0,56 m
Track (L x W) (H)	8 ft x 1 ft 3¾ in	2,41 m x 0,40 m
Length outrigger footprint standard (I)	22 ft 2 in	6,75 m
Width outrigger footprint standard (J)	18 ft 2½ in	5,55 m
Length footprint one side narrow (K)	29 ft 6¾ in	9,00 m
Width footprint one side narrow (L)	12 ft 9½ in	3,90 m
Outrigger plate (L x W)	20½ in x 10½ in	0,52 m x 0,27 m

PRODUCTIVITY	US	Metric
Basket capacity	882 lbs	400 kg
Movable jib	-	-
Basket rotation	180°	180°
Turret rotation	450°	450°
Turret rotation, one side narrow	120°	120°
Stabilization, maximum ground slope	16,7°/30,0 %	16,7°/30,0 %
Height and width track adjustment	19¾/12½ in	50/32 cm
Gradeability, max.	16,7°/30,0 %	16,7°/30,0 %
Slope angle	16,7°/30,0 %	16,7°/30,0 %
Travel speed	1.0 mph	1,6 km/h

WEIGHT	US	Metric
Total weight	26,235 lbs	11.900 kg
Live load in travelling position*	100 psf	4,78 kN/m²
Live load in working position	71 psf	3.36 kN/m²

POWER		
Power sources (Electric and combustion engine)	<b>1) Electric:</b> 400 V, 15,7 A, 7,5 kW <b>2) Diesel:</b> Kubota V 2203-M (20.1 kW/26.9 hp)	
Fuel tank capacity Diesel engine	80,0 l	21.1 gal

\* When an area has been cordoned off: 2,40 x 10,00 m / 7 ft 10 in x 32 ft 10 in



STANDARDS COMPLIANCE		
	EN ISO 9001	
		ANSI/SIA A92.5-2006 section 4 & CSA B354.1-2004 "Design & manufacture criteria"

Product specifications are subject to change without notice or obligation. Photographs and drawings in this document are for illustrative purposes only. Refer to the appropriate Operator's Manual for instructions on the proper use of this equipment. Failure to follow the appropriate Operator's Manual when using our equipment or to otherwise act irresponsibly may result in serious injury or death. The only warranty applicable to our equipment is the standard written warranty applicable to the particular product and sale and we make no other warranty, expressed or implied. Products and services listed may be trademarks, service marks or trade-names of Teupen Maschinenbau GmbH and/or its subsidiaries in the U.S.A. and many other countries. "Teupen", "Access redefined" and "LEO Series" are registered Trademarks of Teupen GmbH in the United States of America and many other countries. Version 2014-A © 2014 Teupen Maschinenbau GmbH.